



Palmer's IT Report Viewer - Overview

The Palmer's IT Report Viewer is a general Structured Query Language (SQL) tool. The Report Viewer is used to extract information from the Palmer's IT products: Charters, Vehicle Maintenance, Education or other data source.

There are many query tools that are provided for databases. However, these tools often are complex and require a higher level of computing familiarity to operate. The Report Viewer provides a simple user interface. Previously defined queries can be run and data extracted to the screen, Excel or a comma separated values file format (CSV).

The Report Viewer expects that another Palmer's IT product has been installed on the computer.

A description of the functions available is detailed later in this document. The application at start up will open with the General Tab ready for running SQL after the Report Viewer has been configured. Two simple tabs have all the controls available to the Report Viewer.

- Installation Instructions
- Setting Up The Configuration
- General SQL Execution



Installation Instructions

The ReportViewer.exe program should be copied to a preferred directory. When run the program will create a directory, \SQL, for saving queries.

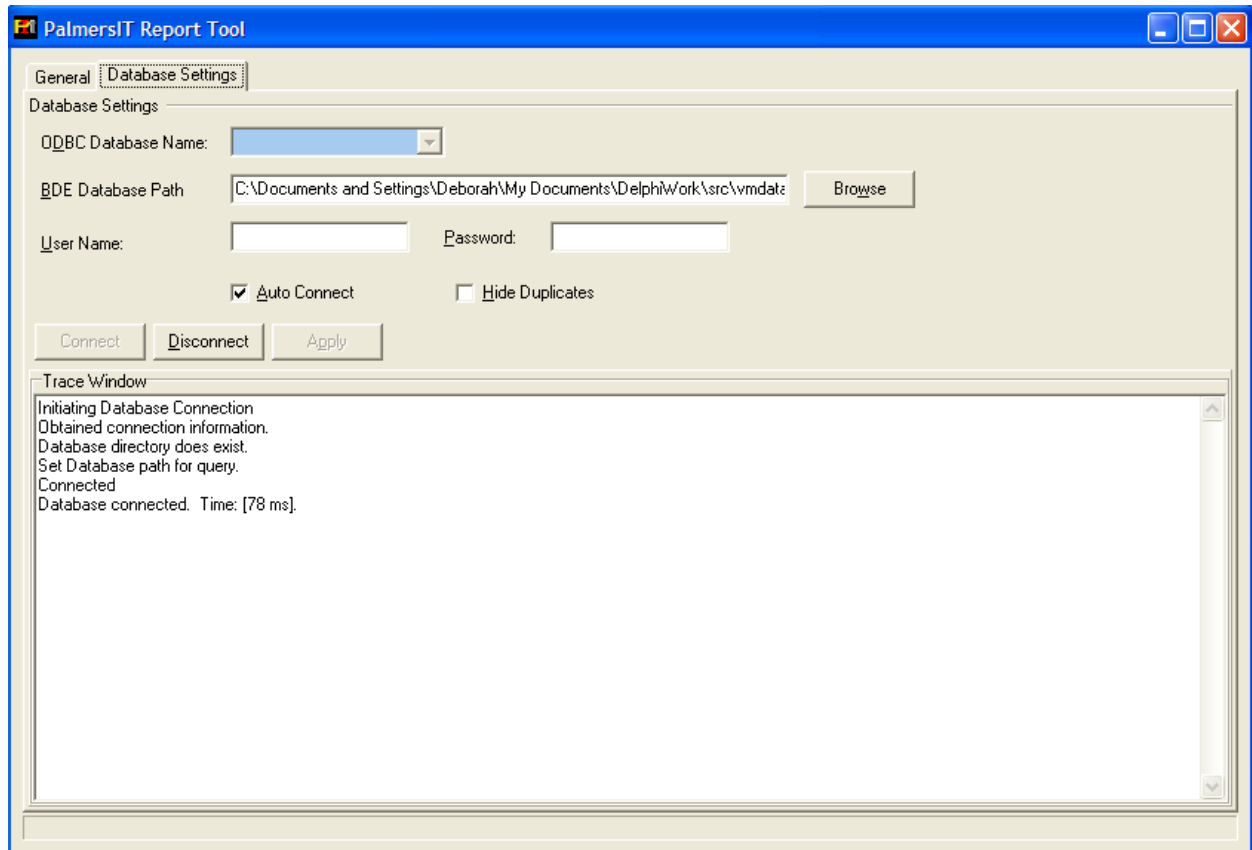
This program cannot run without another Palmers IT product being installed on the computer.

At start up the Report Viewer will open with the General Tab ready for SQL. Click on the Database Settings Tab and enter the database connection information. Settings are saved with the Apply button. The Trace Window shows the progress of connection attempts and other functions performed in the Report Viewer.



Setting Up the Configuration

Database Settings Tab	Overview
	Connection settings are maintained on the Database Settings Tab. A user may select either a ODBC or Borland Database directory path. For the ODBC connection a User Name and Password may be entered to authenticate the connection.





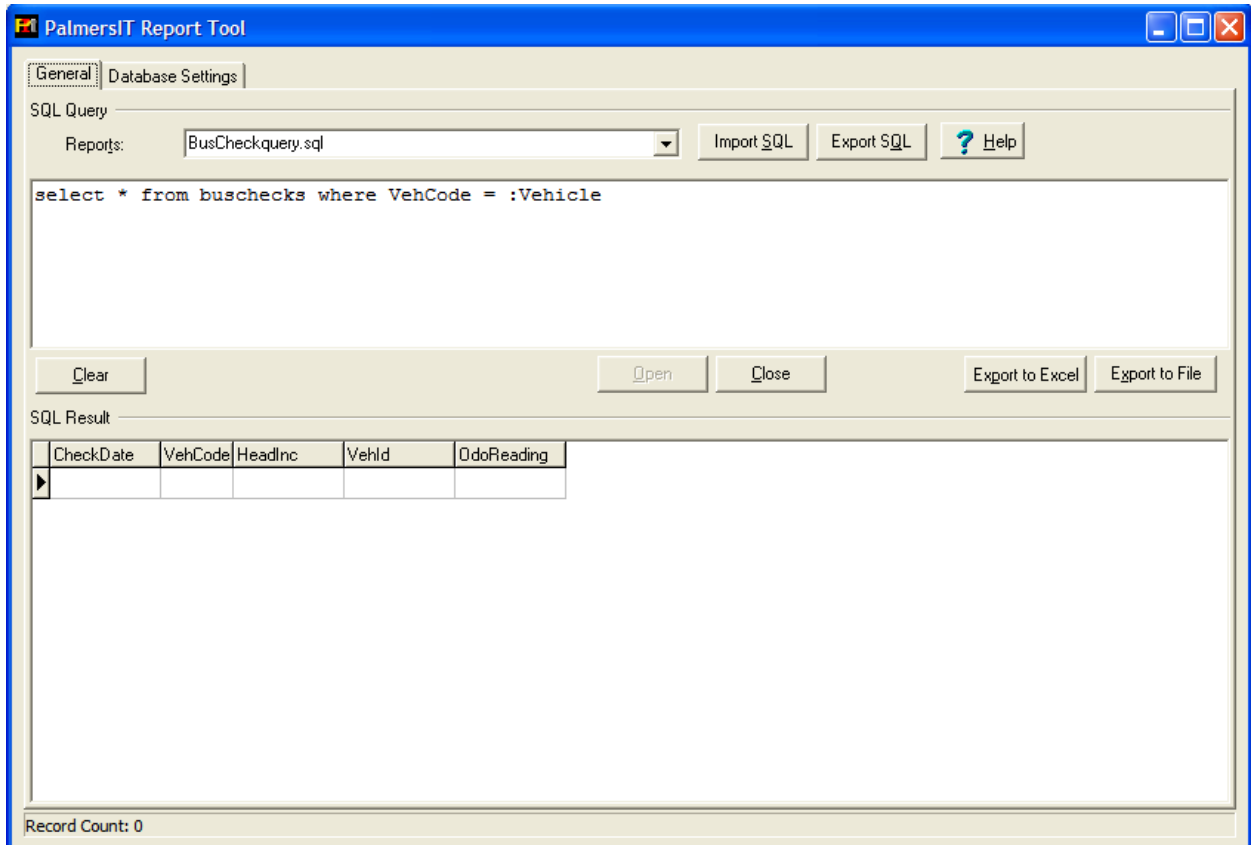
Report Viewer Help

ODBC Database Name	Open Database Connectivity (ODBC) is established in the MS Windows control panel. A list of ODBC data sources is provided for user selection.
BDE Database Path	The path to the Boreland database is entered here. A Browse button is provided to assist with navigation to the database folder. Either an BDE Database path or ODBC database name can be entered but not both.
User Name	An ODBC connection may require a user name to be entered to authenticate the database connection.
Password	An ODBC connection may require a password to be entered to authenticate the database connection.
Auto Connect	Indicates that a connection is to be established as soon as the Report Viewer is started.
Hide Duplicates	If an export to MS Excel is performed this indicates that data that is duplicated between rows is to be suppressed. Provides a structured view to the information retrieved.
Connect	This button connects to the database. The database must be connected before the SQL command buttons are enabled.
Disconnect	This button disconnects from the database.
Trace Window	Messages from the Report Viewer are displayed in the Trace Window.
Locking the database tab	The SQL statement "set database off", executed in the SQL area will lock the database tab and prevent changes. The database tab can be unlocked with the statement "set database on".




General SQL Execution

General Tab	Overview On the general tab, queries are entered, retrieved, executed and exported.
--------------------	---





Reports	A list of the queries available in the SQL directory is shown for user selection. Once a file is selected the contents is displayed in the SQL window immediately below.
Import SQL	A browse dialogue is displayed to navigate to an SQL file. The default folder is the SQL directory. Once a file is selected the contents is displayed in the SQL window immediately below.
Export SQL	An SQL statment can be exported to a file.
Help	Displays this help file in Adobe Reader.
Clear	Clears the SQL window.
Open	Executes the query and returns the results in the SQL Results window..
Close	Clears the SQL Results area and closes the SQL query.
Export to Excel	Exports the SQL Results to Excel. Excel should not be open when an export is requested or unusual results may occur.
Export to File	Create a CSV file with all fields wrapped in quotes and delimited by a comma.
SQL	<p>There are many texts available on the syntax for SQL. Refer to http://en.wikipedia.org/wiki/SQL#Queries for a description of language elements. Statements that cannot be executed in the target database will fail with an error message.</p> <p>The ability to include run time prompts in the SQL has been provided. This will assist with repetitive tasks where data matching to a value is required. a prompt is demonstrated in the following SQL</p> <pre>select * from buschecks where VehCode = :Vehicle</pre> <p>The prompt is indicated by the colon that precedes a prompt name. The prompt name will be shown when the query is run for the user to enter a value. Only prompts for text fields are supported.</p> 



Support

Assistance with SQLs can be provided. Email to Palmer's IT at

palmfam@bigpond.net.au

Normal consulting support rates apply to construct SQLs.